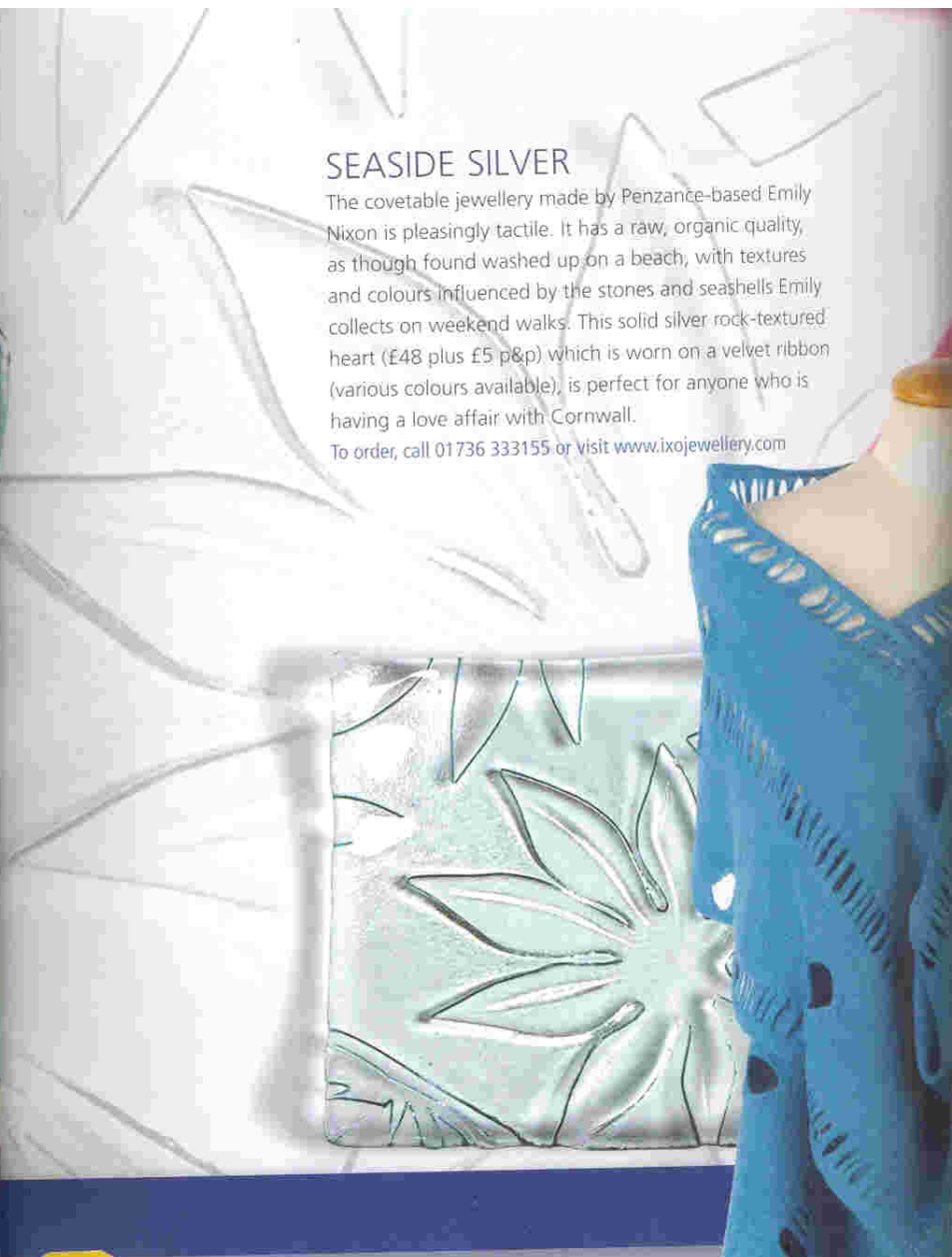




SEASIDE SILVER

The covetable jewellery made by Penzance-based Emily Nixon is pleasingly tactile. It has a raw, organic quality, as though found washed up on a beach, with textures and colours influenced by the stones and seashells Emily collects on weekend walks. This solid silver rock-textured heart (£48 plus £5 p&p) which is worn on a velvet ribbon (various colours available), is perfect for anyone who is having a love affair with Cornwall. To order, call 01736 333155 or visit www.ixojewellery.com



FASTASTIC ORGANICS

You'd be hard pressed to find cosmetics that are greener than this. Hand-made by Inlight at Roskilly's Farm on the Lizard, they are made from an array of wonderfully-scented organic oils, herbs and essential oils - all plant-based and certified organic. Ten skin treats are available, from Floral Face Tonic and Daily Face Oil (shown here, £22) to Restorative Body Butter and Foot & Leg Balm. All are designed to work in harmony with your body, to complement homeopathic therapies, and to help protect the skin from the onslaught of the 21st century. Available from M & L Organics and the Bull Pen shop at Roskilly's Farm, St Keverne TR12 6NX, tel. 01326 281929. Alternatively visit www.inlight-online.co.uk



TOP OF THE GLASS

Cornish light and natural forms inspire the fused glass made by Jo Downs at her Launceston studio. Both elements come together in one of her latest designs - a dish called Ice (from £15), which is inspired by plants at Eden. Hand-made giftware ranges from bowls and mirrors to candlesticks and tiles. Call 01566 779779, or visit the website at www.jodowns.com

SHAPE

er Gary Warrell started polly clay boats at home way to unwind after high involves interior objects for prestigious wall and London. Every and carries its own It's no surprise that end up featuring in nes. Three sizes are ed from £50 to £150. 977 299271 or email tmail.co.uk

KN This sha sett kni whi cati cor gra For ita ww